



微墅太空舱科技
Weishu Spacecraft Technology

重构自然的生活方式

RECONSTRUCT THE WAY OF LIVING BACK TO NATURE



VSTKC 微墅太空舱科技为国内文旅产业高端旅宿品牌，公司成立于2020年5月26日，创始团队皆为国内外预制建筑行业领域顶尖人才，具有完整的设计研发、生产、运营及售后服务体系，生产工厂位于佛山三水区乐平镇范湖工业生产基地，占地3.2万平方米的标准化生产车间，致力于为景区、民宿、度假村、户外营地、主题公园、私人住宅、公共社区、户外驿站等应用场景提供高品质的太空舱产品和解决方案。

VSTKC 太空舱产品广泛应用于多种户外场地，如雪山、沙漠、海岸、山丘、草原、滩涂等环境，不受地形限制，安装过程全程绿色环保，不破坏地基，不破坏生态，可实现全地形覆盖。产品全屋集成，整体运送，无需现场施工装修，不产生任何建筑废料，接通水电即刻轻松拎包入住。

VSTKC 微墅太空舱科技专注行业多年，坚持以重构回归自然的栖居方式、开创太空舱旅居新体验为使命，以“品质、科技、服务”为理念，以系统性的创新实践助力开拓中国预制建筑行业之路，致力于为全球客户提供高品质的移动装配式建筑产品。

VSTKC Weishu Spacecraft Technology is a high-end tourism brand in the domestic cultural and tourism industry. The company was established on May 26, 2020, with a founding team of top talents in the prefabricated construction industry at home and abroad. It has a complete design, research and development, production, operation, and after-sales service system. The production factory is located in Fanhu Industrial Production Base, Leping Town, Sanshui District, Foshan, covering an area of 32000 square meters of standardized production workshops. It is committed to providing high-quality spacecraft products and solutions for application scenarios such as scenic spots, homestays, resorts, outdoor campsites, theme parks, private residences, public communities, and outdoor stations.

VSTKC The space capsule products are widely used in a variety of outdoor sites, such as snow mountains, deserts, coasts, hills, grasslands, mudflat and other environments. They are not limited by the terrain. The installation process is green and environmentally friendly, without damaging the foundation and ecology, and can achieve all terrain coverage. The product is fully integrated throughout the house and transported as a whole, without the need for on-site construction or decoration, and does not generate any construction waste. It is easy to move in immediately after connecting water and electricity.

VSTKC Weishu Spacecraft Technology has been focusing on the industry for many years, adhering to the mission of reconstructing a way of living that returns to nature and creating new experiences for spacecraft travel. With the concept of "quality, technology, and service", it uses systematic innovative practices to help explore the path of China's prefabricated construction industry, and is committed to providing high-quality mobile prefabricated building products for global customers.



\$ 13000

P03 长宽高 L×W×H : 5.6 m×3.5 m×3.2 m
 占地面积 Area covered : 20 m²
 入住人数 NO. of guests : 2 persons



\$ 17000

P05 长宽高 L×W×H : 9.0 m×3.3 m×3.2 m
 占地面积 Area covered : 30 m²
 入住人数 NO. of guests : 2 persons



\$ 18000

P06 长宽高 L×W×H : 9.0 m×3.3 m×3.2 m
 占地面积 Area covered : 30 m²
 入住人数 NO. of guests : 2 persons



\$ 22300

P07 长宽高 L×W×H : 11.5 m×3.3 m×3.2 m
 占地面积 Area covered : 38 m²
 入住人数 NO. of guests : 2 persons



\$ 15000

E05 长宽高 L×W×H : 8.5 m×3.3 m×3.2 m
 占地面积 Area covered : 28 m²
 入住人数 NO. of guests : 2 persons



\$ 21000

E6A 长宽高 L×W×H : 10 m×3.4 m×3.2 m
 占地面积 Area covered : 34 m²
 入住人数 NO. of guests : 2-4 persons



\$ 21000

E07 长宽高 L×W×H : 11.5 m×3.3 m×3.2 m
 占地面积 Area covered : 38 m²
 入住人数 NO. of guests : 4 persons



\$ 38000

E09 长宽高 L×W×H : 13 m×4.5 m×3.2 m
 占地面积 Area covered : 58.5 m²
 入住人数 NO. of guests : 4 persons



\$ 13000

K01 长宽高 L×W×H : 6.5 m×3.3 m×3.2 m
 占地面积 Area covered : 21m²
 入住人数 NO. of guests : 2 persons



\$ 17000

K03 长宽高 L×W×H : 6.5 m×3.6 m×3.2 m
 占地面积 Area covered : 23.4 m²
 入住人数 NO. of guests : 2 persons



\$ 27000

K7A 长宽高 L×W×H : 11.5 m×4.0 m×3.2 m
 占地面积 Area covered : 46 m²
 入住人数 NO. of guests : 4 persons



\$ 27000

K09 长宽高 L×W×H : 11.5 m×3.6 m×3.2 m
 占地面积 Area covered : 41 m²
 入住人数 NO. of guests : 3 persons



\$ 33000

K05 长宽高 L×W×H : 1层 8.7 m×3.3 m×3.2 m
2层 8.7 m×3.3 m×3.2 m
占地面积 Area covered : 57 m²
入住人数 NO. of guests : 4 persons



\$ 43000

K06 长宽高 L×W×H : 1层 11.5 m×3.6 m×3.2 m
2层 9.0 m×3.6 m×2.8 m
占地面积 Area covered : 74 m²
入住人数 NO. of guests : 4 persons



\$ 46700

K07 长宽高 L×W×H : 1层 11.5 m×3.6 m×3.2 m
2层 11.5 m×3.6 m×3.2 m
占地面积 Area covered : 82 m²



\$ 47000

K08 长宽高 L×W×H : 1层 11.5 m×3.6 m×3.2 m
2层 11.5 m×3.6 m×3.2 m
占地面积 Area covered : 82 m²



\$ 21000

V06 长宽高 L×W×H : 9.0 m×3.6 m×3.2 m
 占地面积 Area covered : 32.5 m²
 入住人数 NO. of guests : 2-4 persons



\$ 23000

V7A 长宽高 L×W×H : 11.5 m×3.3 m×3.2 m
 占地面积 Area covered : 38m²
 入住人数 NO. of guests : 4 persons



\$ 24000

V07 长宽高 L×W×H : 11.5 m×3.6 m×3.2 m
 占地面积 Area covered : 41.4 m²
 入住人数 NO. of guests : 4 persons



\$ 27000

V09 长宽高 L×W×H : 11.5 m×3.6 m×3.2 m
 占地面积 Area covered : 41.4 m²
 入住人数 NO. of guests : 4 persons



\$ 12000

D02 长宽高 L×W×H : 6.0 m×3.3 m×3.2 m
 占地面积 Area covered : 20 m²
 入住人数 NO. of guests : 2 persons



\$ 24000

D07 长宽高 L×W×H : 10 m×3.6 m×3.2 m
 占地面积 Area covered : 36 m²
 入住人数 NO. of guests : 4 persons



\$ 24000

D08 长宽高 L×W×H : 10 m×3.6 m×3.2 m
 占地面积 Area covered : 36 m²
 入住人数 NO. of guests : 2 persons



\$ 25600

D09 长宽高 L×W×H : 11 m×3.6 m×3.2 m
 占地面积 Area covered : 40 m²
 入住人数 NO. of guests : 4 persons



\$ 25600

P08 长宽高 L×W×H : 11.5 m×3.5 m×3.5 m
 占地面积 Area covered : 40 m²
 入住人数 NO. of guests : 2-3 persons



\$ 15400

M02 长宽高 L×W×H : 6.6 m×3.6 m×3.2 m
 占地面积 Area covered : 24 m²
 入住人数 NO. of guests : 2 persons



\$ 25000

P09 长宽高 L×W×H : 11.5 m×3.3 m×3.5 m
 占地面积 Area covered : 38 m²
 入住人数 NO. of guests : 2-3 persons



\$ 18000

M05 长宽高 L×W×H : 8.3 m×3.6 m×3.2 m
 占地面积 Area covered : 30 m²
 入住人数 NO. of guests : 2-4 persons



\$ 13700

A03 长宽高 L×W×H : 5.6 m×3.6 m×3.2 m

占地面积 Area covered : 20 m²



\$ 16800

A05 长宽高 L×W×H : 7.1 m×4.5 m×3.2 m

占地面积 Area covered : 32 m²

入住人数 NO. of guests : 2-3 persons



\$ 16500

A07 长宽高 L×W×H : 11.5 m×2.25 m×3.2 m

占地面积 Area covered : 26 m²



\$ 21000

A12 长宽高 L×W×H : 11.5 m×3.3 m×3.2 m

占地面积 Area covered : 38 m²



\$ 14000

帐篷一号 Tent No.1

长宽高 L×W×H : 7.0 m × 4.0 m × 3.2 m

占地面积 Area covered : 28 m²

入住人数 NO. of guests : 2 persons



\$ 21000

木屋一号 Wooden House No.1

长宽高 L×W×H : 10.3 m × 3.8 m × 3.2 m

占地面积 Area covered : 39 m²

入住人数 NO. of guests : 2 persons



\$ 25000

三角屋 Triangular House

长宽高 L×W×H : 6.5m × 3.8 m × 2.6 m

6.5m × 3.1 m × 3 m



\$ 21000

木屋二号 Wooden House No.2

长宽高 L×W×H : 8.3 m × 4.5 m × 3.5 m

占地面积 Area covered : 37m²



\$ 24000

文旅方舱

长宽高 L×W×H : 10 m×4.0 m×3.5 m
占地面积 Area covered : 40 m²



\$ 25400

KTV 咖啡厅

长宽高 L×W×H : 11 m×3.8 m×3.2 m
占地面积 Area covered : 42 m²



\$ 24000

公共卫生间

长宽高 L×W×H : 11.5 m×3.3 m×3.2 m



\$ 70000

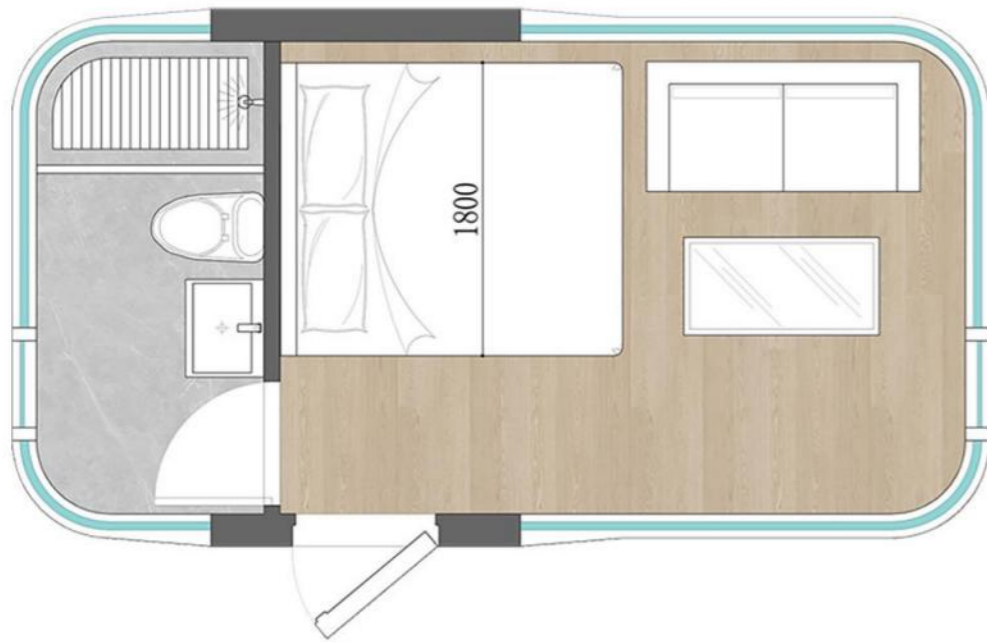
水滴美墅

长宽高 L×W×H : 9.0m×9.0 m×3.5 m (φ 9.0M)

D02 配置单



长 宽 高 L × W × H : 6.0 m × 3.3 m × 3.2 m
 占地面积 Area covered : 20 m²
 入住人数 NO. of guests : 2 persons
 耗 电 量 Power consumption : 7KW
 总 重 量 Total weight : ≈ 5T (吨)



产品平面布局图

外围保护体系

镀锌钢结构框架体系
 氟碳漆喷涂铝板外壳模块
 保温防水防潮构造体系
 Low-E夹胶钢化落地玻璃
 铝合金窗
 烤漆不锈钢平开入户门

冷暖空调

电热水器
 新风系统
 防蚊虫纱门窗
 照明取暖换气吹风浴霸
 品牌马桶

客控系统

多情景模式功能面板
 照明/电动窗帘
 智能语音控制
 酒店智能门禁

室内精装

铝板天花/墙面模块/石晶木纹地板
 卫生间隐私玻璃门
 卫生间淋浴房/大理石/瓷砖地面
 洗手台/台盆/卫浴镜
 挂衣钩/淋浴置物架/毛巾架
 品牌水龙头/花洒/地漏
 全屋照明系统
 全屋水电系统
 标准色遮光窗帘

D02 Configuration Form

Peripheral protection system

Galvanized steel structural framework system
 Fluorocarbon paint sprayed aluminum plate shell module
 Thermal insulation, waterproof and moisture-proof construction system
 Low-E laminated tempered floor glass
 Aluminum alloy windows
 Painted stainless steel flat opening entrance door

Customer control system

Multi scenario mode function panel
 Lighting/Electric Curtains
 Intelligent voice control
 Hotel intelligent access control

Indoor decoration

Aluminum panel ceiling/wall module/stone crystal wood grain floor
 Bathroom privacy glass door
 Bathroom shower room/marble/tile floor
 Washbasin/sink/bathroom mirror
 Hanging clothes hook/shower storage rack/towel rack
 Faucet/Flower Wine/Floor Drain
 Whole house lighting system
 Whole house water and electricity system
 Standard color blackout curtains
 Cold and hot air conditioning
 Electric water heater
 Fresh air system
 Mosquito and insect screen doors and windows
 Lighting, heating, ventilation, blowing, bath heater
 Brand closetool



P05 配置单

P05 Configuration Form



长 宽 高 L × W × H : 9.0 m × 3.3 m × 3.2 m
 占地面积 Area covered : 30 m²
 入住人数 NO. of guests : 2 persons
 耗 电 量 Power consumption : 8KW
 总 重 量 Total weight : ≈ 7T (吨)

外围保护体系

镀锌钢结构框架体系
 氟碳漆喷涂铝板外壳模块
 保温防水防潮构造体系
 Low-E夹胶钢化落地玻璃
 铝合金门窗
 中空夹胶钢化玻璃天窗
 烤漆不锈钢平开入户门
 全景阳台

冷暖空调

电热水器
 新风系统
 防蚊虫纱门窗
 照明取暖换气吹风浴霸
 品牌马桶

选配硬装家具

衣柜
 橱柜
 吧台

客控系统

多情景模式功能面板
 照明/电动窗帘
 智能语音控制
 酒店智能门禁

室内精装

铝板天花/墙面模块/石晶木纹地板
 卫生间隐私玻璃门
 卫生间淋浴房/大理石/瓷砖地面
 洗手台/台盆/卫浴镜
 挂衣钩/淋浴置物架/毛巾架
 品牌水龙头/花洒/地漏
 全屋照明系统
 全屋水电系统
 标准色遮光窗帘

Peripheral protection system

Galvanized steel structural framework system
 Fluorocarbon paint sprayed aluminum plate shell module
 Thermal insulation, waterproof and moisture-proof construction system
 Low-E laminated tempered floor glass
 Aluminum alloy doors and windows
 Hollow laminated tempered glass skylight
 Painted stainless steel flat opening entrance door
 Panoramic balcony

Customer control system

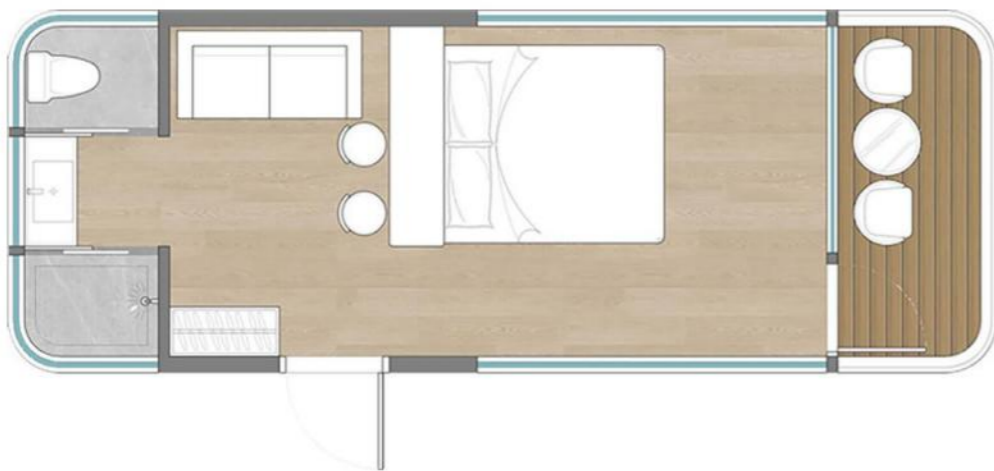
Multi scenario mode function panel
 Lighting/Electric Curtains
 Intelligent voice control
 Hotel intelligent access control

Indoor decoration

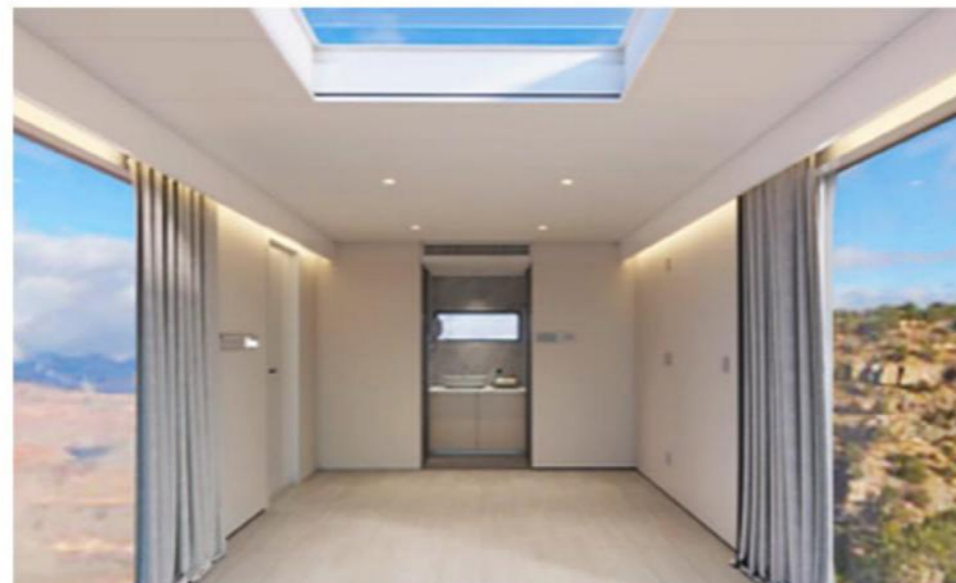
Aluminum panel ceiling/wall module/stone crystal wood grain floor
 Bathroom privacy glass door
 Bathroom shower room/marble/tile floor
 Washbasin/sink/bathroom mirror
 Hanging clothes hook/shower storage rack/towel rack
 Brand faucet/flower wine/floor drain
 Whole house lighting system
 Whole house water and electricity system
 Standard color blackout curtains
 Cold and hot air conditioning
 Electric water heater
 Fresh air system
 Mosquito and insect screen doors and windows
 Lighting, heating, ventilation, blowing, bath heater
 Brand closetool

Optional hard furniture

Wardrobe
 Cupboard
 Bar counter



产品平面布局图

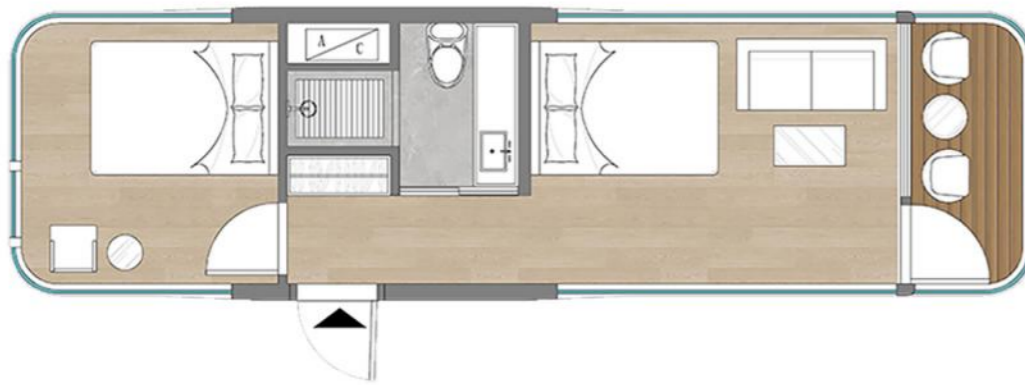


E07 配置单

E07 Configuration Form



长 宽 高 L × W × H : 11.5 m × 3.3 m × 3.2 m
 占地面积 Area covered : 38 m²
 入住人数 NO. of guests : 4 persons
 耗 电 量 Power consumption : 10KW
 总 重 量 Total weight : ≈ 9.5T (吨)



产品平面布局图

外围保护体系

镀锌钢结构框架体系
 氟碳漆喷涂铝板外壳模块
 保温防水防潮构造体系
 Low-E夹胶钢化落地玻璃
 铝合金门窗
 中空夹胶钢化玻璃天窗
 烤漆不锈钢平开入户门
 全景阳台

冷暖空调

电热水器
 新风系统
 防蚊虫纱门窗
 照明取暖换气吹风浴霸
 品牌马桶

硬装家具

衣柜

客控系统

多情景模式功能面板
 照明/电动窗帘
 智能语音控制
 酒店智能门禁

室内精装

铝板天花/墙面模块/石晶木纹地板
 卫生间隐私玻璃门
 卫生间淋浴房/大理石/瓷砖地面
 洗手台/台盆/卫浴镜
 挂衣钩/淋浴置物架/毛巾架
 品牌水龙头/花洒/地漏
 全屋照明系统
 全屋水电系统
 标准色遮光窗帘

Peripheral protection system

Galvanized steel structural framework system
 Fluorocarbon paint sprayed aluminum plate shell module
 Thermal insulation, waterproof and moisture-proof construction system
 Low-E laminated tempered floor glass
 Aluminum alloy doors and windows
 Hollow laminated tempered glass skylight
 Painted stainless steel flat opening entrance door
 Panoramic balcony

Customer control system

Multi scenario mode function panel
 Lighting/Electric Curtains
 Intelligent voice control
 Hotel intelligent access control

Indoor decoration

Aluminum panel ceiling/wall module/stone crystal wood grain floor
 Bathroom privacy glass door
 Bathroom shower room/marble/tile floor
 Washbasin/sink/bathroom mirror
 Hanging clothes hook/shower storage rack/towel rack
 Brand faucet/flower wine/floor drain
 Whole house lighting system
 Whole house water and electricity system
 Standard color blackout curtains
 Cold and hot air conditioning
 Electric water heater
 Fresh air system
 Mosquito and insect screen doors and windows
 Lighting, heating, ventilation, blowing, bath heater
 Brand closetool

Hard furniture

Wardrobe



帐篷一号 配置单

Tent No.1 Configuration Form



长 宽 高 L × W × H : 7.0 m × 4.0 m × 3.5 m
 占地面积 Area covered : 28 m²
 入住人数 NO. of guests : 2 persons
 耗 电 量 Power consumption : 7KW
 总 重 量 Total weight : ≈ 6T (吨)



推拉门出平台
 产品平面布局图

外围保护体系
 镀锌钢结构框架体系
 氟碳漆喷涂铝板外壳模块
 保温防水防潮构造体系
 Low-E夹胶钢化落地玻璃
 铝合金门窗

冷暖空调
 电热水器
 新风系统
 防蚊虫纱门窗
 照明取暖换气吹风浴霸
 品牌马桶

客控系统
 多情景模式功能面板
 照明/电动窗帘
 智能语音控制
 酒店智能门禁

选配硬装家具
 衣柜

室内精装
 铝板天花/墙面模块/石晶木纹地板
 卫生间隐私玻璃门
 卫生间淋浴房/大理石/瓷砖地面
 洗手台/台盆/卫浴镜
 挂衣钩/淋浴置物架/毛巾架
 品牌水龙头/花洒/地漏
 全屋照明系统
 全屋水电系统
 标准色遮光窗帘

Peripheral protection system
 Galvanized steel structural framework system
 Fluorocarbon paint sprayed aluminum plate shell module
 Thermal insulation, waterproof and moisture-proof construction system
 Low-E laminated tempered floor glass
 Aluminum alloy doors and windows

Customer control system
 Multi scenario mode function panel
 Lighting/Electric Curtains
 Intelligent voice control
 Hotel intelligent access control

Indoor decoration
 Aluminum panel ceiling/wall module/stone crystal wood grain floor
 Bathroom privacy glass door
 Bathroom shower room/marble/tile floor
 Washbasin/sink/bathroom mirror
 Hanging clothes hook/shower storage rack/towel rack
 Brand faucet/flower wine/floor drain
 Whole house lighting system
 Whole house water and electricity system
 Standard color blackout curtains

Cold and hot air conditioning
 Electric water heater
 Fresh air system
 Mosquito and insect screen doors and windows
 Lighting, heating, ventilation, blowing, bath heater
 Brand closetool

Optional hard furniture
 Wardrobe



落地项目展示 Project Presentation



内蒙呼伦贝尔项目 Hulunbeir project
产品 Product: D02、D07、D09



落地项目展示 Project Presentation



湖南郴州项目 Chenzhou project
产品 Product: E01、E06、D02、D06、D08



落地项目展示 Project Presentation



浙江绍兴项目 Shaoxing project
产品 Product: E01、E08、D06



落地项目展示 Project Presentation



广东江门项目 Guangdong project
产品 Product: P05、V08、K09



落地项目展示 Project Presentation



新疆项目 Xinjiang project
产品 Product: K03、鸟巢



落地项目展示 Project Presentation



湖北项目 Hubei project
产品 Product: V8K、K08



落地项目展示 Project Presentation



广西贺州项目 Guangxi project
产品 Product: D07、D09



落地项目展示 Project Presentation



广西浦北项目 Guangxi project
产品 Product: E07 (K07)、A12、木屋 Wooden house





VSTKC 微墅太空舱科技专注于高端文旅市场，为景区、民宿、度假村、户外营地、主题公园、私人住宅、公共社区、户外驿站等应用场景提供高品质的太空舱产品、解决方案以及项目规划、智能管理、综合运营服务等，配套的系统技术支持和高效专业的售后服务团队，第一时间解决任何问题，助您全程无忧。

VSTKC Weishu Spacecraft Technology focuses on the high-end cultural and tourism market, providing high-quality spacecraft products, solutions, project planning, intelligent management, comprehensive operation services, etc. for application scenarios such as scenic spots, homestays, resorts, outdoor campsites, theme parks, private residences, public communities, outdoor stations, etc. The supporting system technical support and efficient professional after-sales service team solve any problems in the first time, helping you worry free throughout the process.



工厂发货 Factory Shipping

产品外包装后，由大型平板车运输。产品从工厂到营地的过程中，将采取严格的安全防护措施，确保运输过程中的安全稳定。

After the products are packaged, they are transported by large flatbed trucks. Strict safety protection measures will be taken when products are transported from the factory to the camp to ensure safety and stability during transportation.

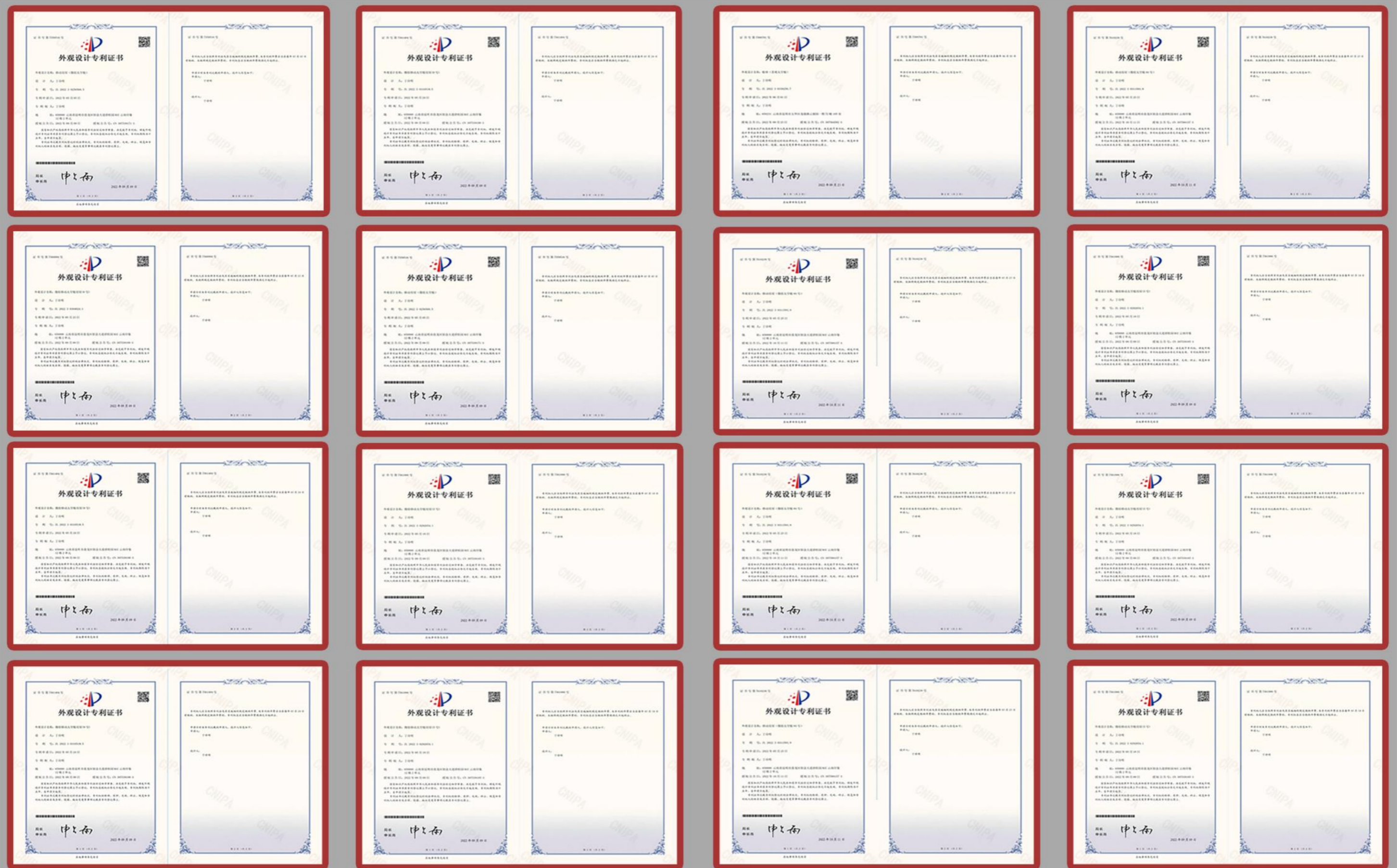


产品吊装 Product Hoisting

运输车辆到达当地后，需要用大型吊车进行吊装和降落。产品到达工程现场后，应结合现场实际情况，提供相应的起重设备、起重位置及吨位数据。

After the transport vehicle arrives at the local area, it needs to be hoisted and lowered using a large crane. After the product arrives at the project site, the corresponding lifting equipment, lifting position and tonnage data should be provided based on the actual conditions on site.

国家专利 National Patent



VSTKC 微墅®

50+项国家专利认证

There are more than 50 patent certifications.

微墅

